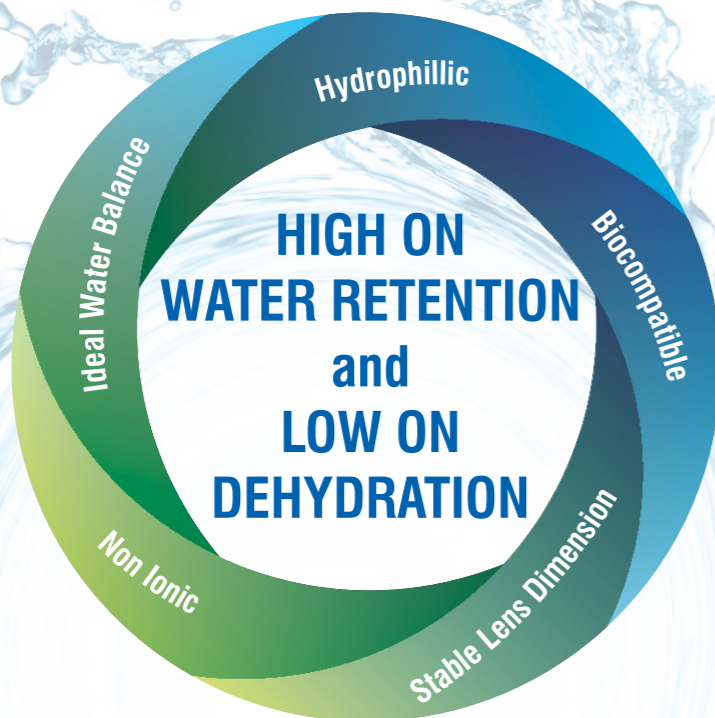


Conta Aqua

Monthly Disposable Lenses

Disposable Lenses



ASPHERIC DISPOSABLE SOFT CONTACT LENSES

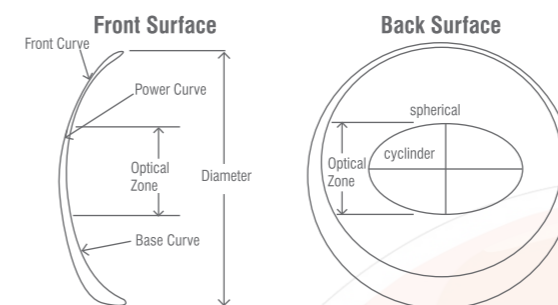
CONTACARE[®] Toric

Soft Contact Lens

Soft Contact Lenses

- Back surface for Toric design
- Enhanced equilibrium as combined with prism blast design
- Integrity of Technology with an up-to-date style

Remarkable Design for Enhanced Wearing Comfort



- Prescription with an outstanding convenience
- Thinner and Round shape of edge design with an accurate curvature in order to improve wearing comfort without any pain

Lens Specification

Material	2 - HEMA
Manufacturing Process	LATHE CUT (CNC)
Water Content	38%
Base Curve	8.6 mm
Diameter	14.2 mm
Center Thickness(@ -3.00 D)	0.09 mm
Design	Prism blast with back surface toric design
Orientation Mark	6 O'clock
Power Range	
Spherical	+4.00 D to -6.00 D (in .25 D), -6.5 to -25 D (0.5 D)
Cylindrical	-0.75, -1.25, -1.75, -2.25, -2.75 & -3.25 DC
Axis Core	160°, 170°, 180°, 10°, 20°, 90°
Axis Non-Core	30°, 40°, 50°, 60°, 70°, 80°, 100°, 110°, 120°, 130°, 140° & 150°
Available As	Clear Toric & Color Toric (Blue, Brown, Gray, Green, Violet, Hazel & Honey)

CE
1023



Customized Contact lenses

Contact Lenses with precision based on prescription

Contact lenses

Soft Contact lenses

- ⊙ Soft Daily Wear Clear / Blue
- ⊙ Soft Extended Wear (74% Water Content) Clear / Blue

RGP Contact lenses

- ⊙ 912 Hard
- ⊙ Semi Soft (Blue/Grey)
- ⊙ LDF 10/20/30/40/50/60/70/80/90
- ⊙ SGP II Green
- ⊙ Conta-V75
- ⊙ K-Conta Lens

Contact Lens design for Keratoconus Lens

ContaSof 38 / UV

The Complete UV Protected Cast Moulded Soft Contact Lens

Material: 62% HEMA, 38% water

Tangential edge for Better Comfort & Durability

Nominal Centre Thickness: 0.09 mm @ -3.00D

Diameter: 14.0 mm

Base Curve: 8.6 mm

Wear Indication: Daily wear

Power Range:

+06.00 to -12.00

00.00 to -06.00 (0.25D steps)

-06.50 to -12.00 (0.50D steps)

+00.25 to +04.00 (0.25D steps)

+04.50 to +06.00 (0.50D steps)



CareSof 42

Premium Aspheric Lens For Sharp Vision

Material: 58% HEMA, 42% water

Base Curve: 8.6 mm

Diameter: 14.0 mm

Nominal Center Thickness: 0.07mm@ -3.00D

Oxygen Permeability: Dk @ 35° C - 9.5×10^{-11}

(Cm^2/s) ($\text{mlO}_2/\text{ml.mm Hg}$)

Wear Indication: Daily wear

Power Range:

- 00.25 to -12.00

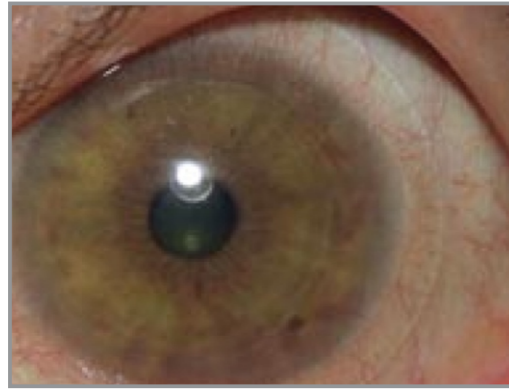
- 00.25 to - 06.00 (0.25D steps)

- 06.50 to - 12.00 (0.50D steps)

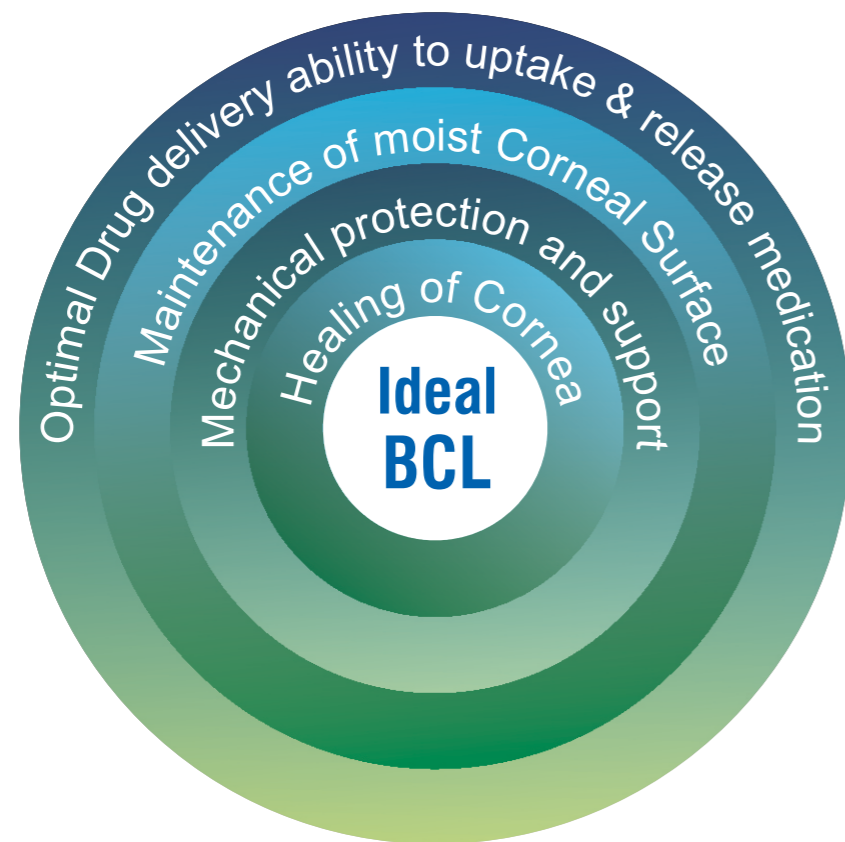


BCL

Bandage Contact lenses



- Extended Wear.
- High Water Content.
- Optimum Oxygen permeability



*Customized Bandage Contact Lenses are also available



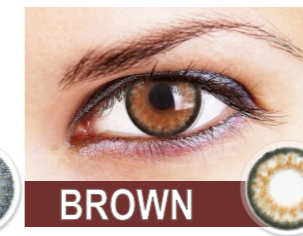
Color Contact Lenses

Real Eyes with Real lies...

*Let World see your **Colours***



BLUE



BROWN



GRAY



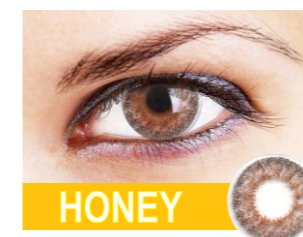
GREEN



VIOLET



HAZEL



HONEY

Available in
00.00 to -10.00 D &
Toric range



CONTACARE COLOURS®

COOL. SOBER. DECENT.

Colour Contact lens specially made for you